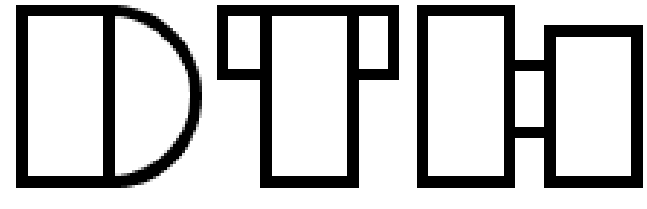


Contractor Must Check And Verify All Dimensions On The Job.
Do Not Scale The Drawings.
All Drawings, Specifications And Related Documents Are The Copyright Of
The Architect And Must Be Returned Upon Request.
Reproduction Of Drawings, Specifications And Related Documents
In Part Or Whole, Is Forbidden Without The Architects Written Permission.
This Drawing Is Not To Be Used For Construction Until Signed By The Architect.
Date:



No. Revision Date



GRAND HARWOOD PLACE
Proposed Mixed - Use Development
184 Harwood Avenue, Ajax, Ontario

Drawing Title

Cover Sheet

Project

GRAND HARWOOD PLACE
Proposed Mixed-Use
Development

184 Harwood Avenue, Ajax, Ontario

Scale

Drawn by

Checked by

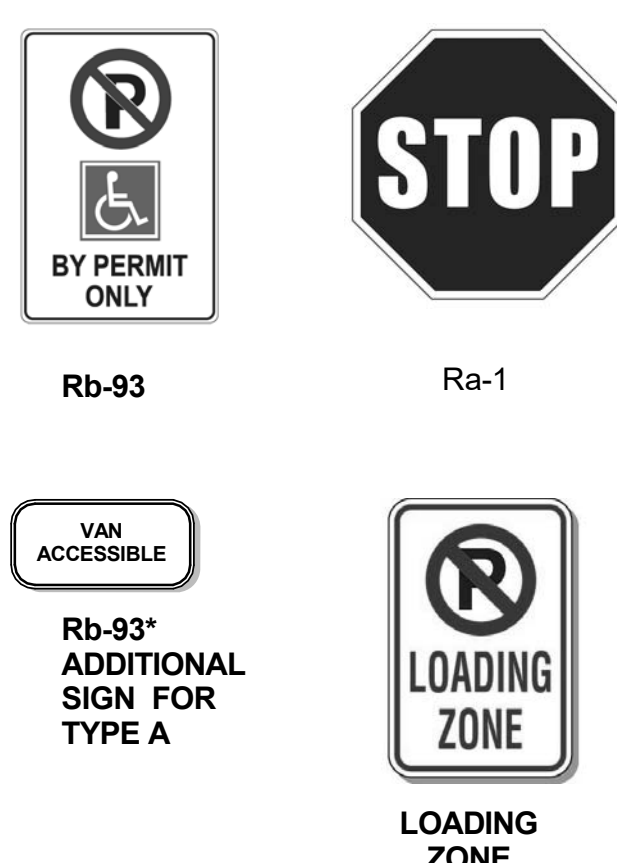
Project No.

Date

Drawing No.

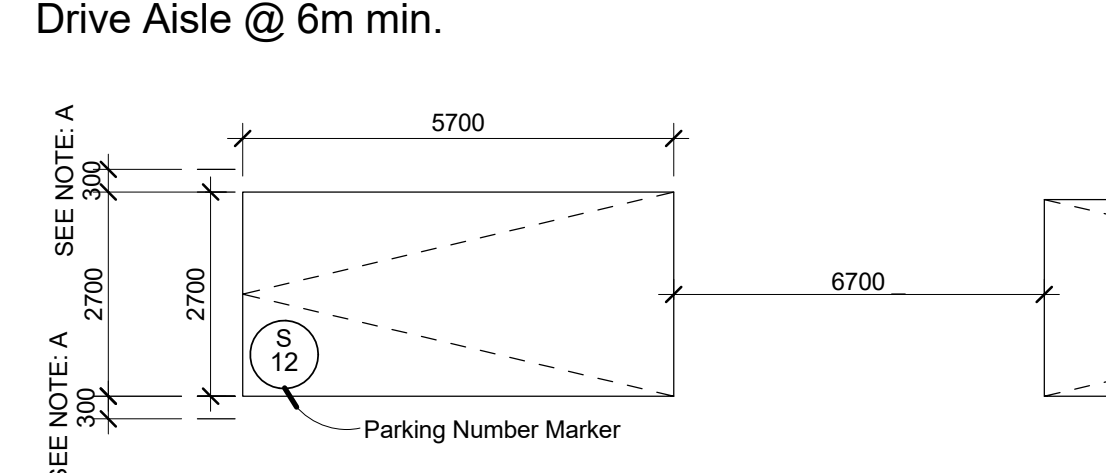
A0.0

- NOTES:**
- FOR LANDSCAPE INFORMATION - REFER TO MBTW LANDSCAPE DWG
 - FOR SITE SERVING / GRADING DETAILS - REFER TO MORRISON HERSHFIELD SITE SERVING GRADING DWG
 - FOR TRAFFIC SIGN INFO - REFER TO TRAFFIC REPORT BY CONSULTING LIMITED
 - SEE LANDSCAPE DRAWINGS FOR GRADING INFORMATION
 - SEE FIRST FLOOR PLAN, CIVIL AND LANDSCAPE DRAWINGS FOR GRADING INFORMATION



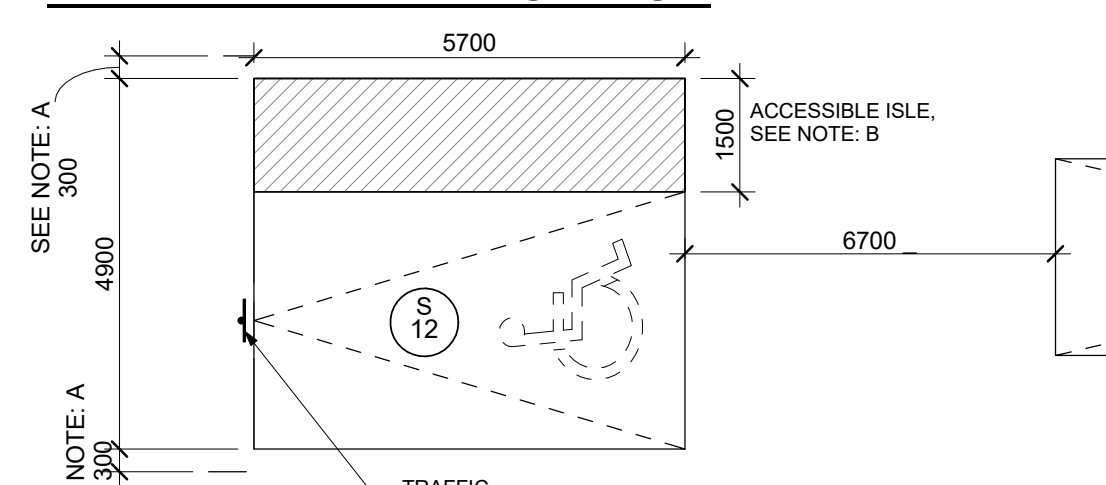
Traffic Signs 3
NTS A1.1

TYPICAL PARKING SPACE:
Drive Aisle @ 6m min.



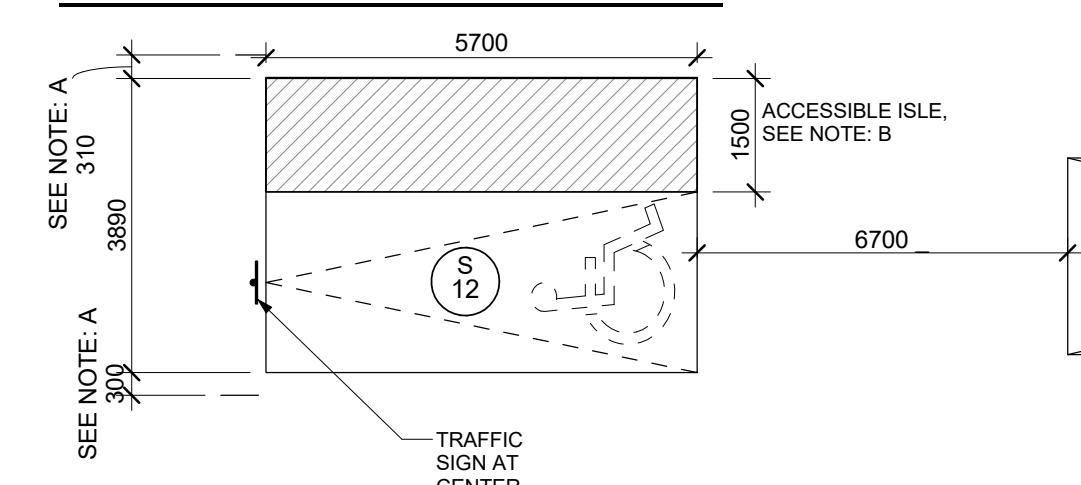
NOTES:
A- PROVIDE AN ADDITIONAL 300mm FOR PARKING SPACE WIDTH WHEN OBSTRUCTIONS OCCUR BETWEEN THE FRONT AND REAR 1000mm

TYPE A: BARRIER FREE PARKING SPACE:



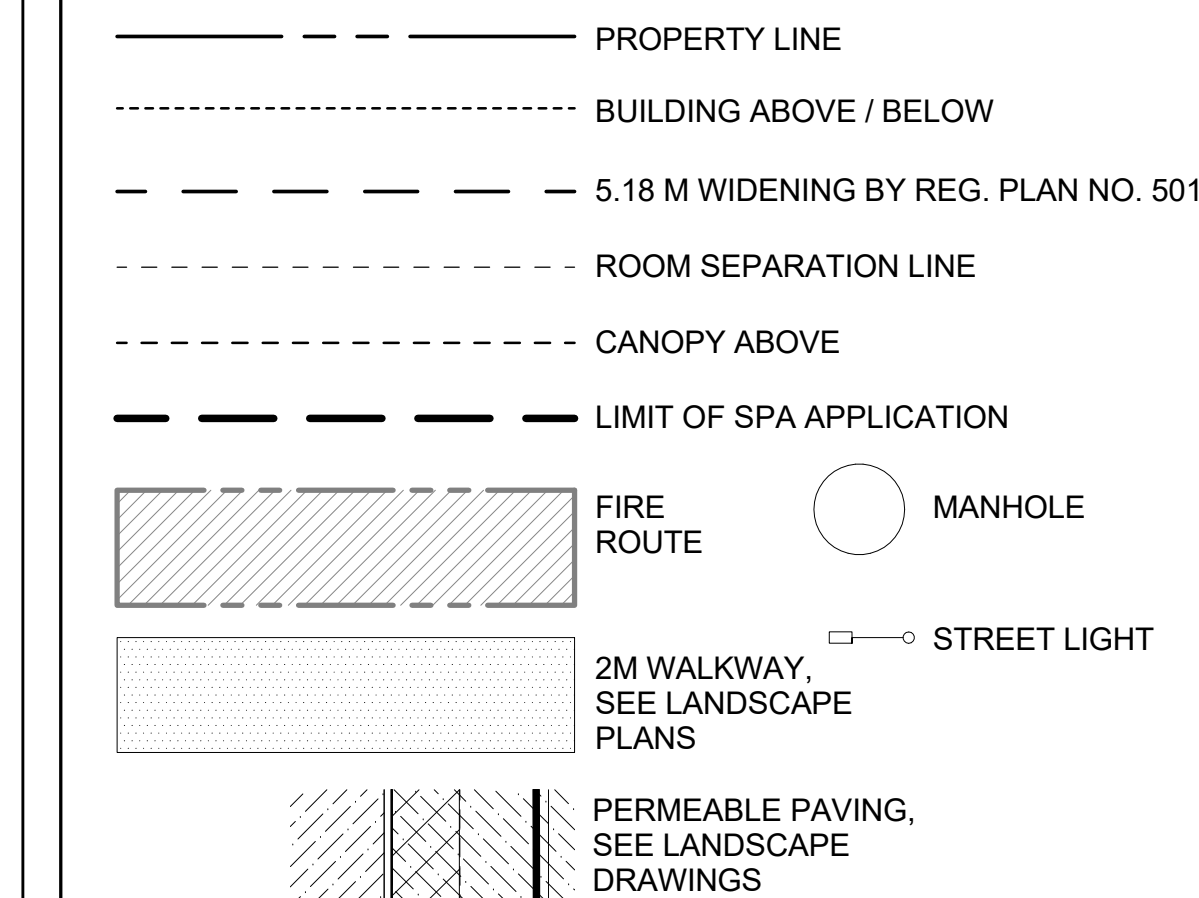
NOTE A- PROVIDE AN ADDITIONAL 300mm FOR PARKING SPACE WIDTH WHEN OBSTRUCTIONS OCCUR BETWEEN THE FRONT AND REAR 1000mm
B- ACCESSIBLE AISLE MUST HAVE A MINIMUM WIDTH OF 1500mm. MUST EXTEND THE FULL LENGTH OF THE PARKING SPACE. MUST BE MARKED WITH HIGH TONAL CONTRAST DIAGONAL LINES WHICH DISCOURAGES PARKING BY UNAUTHORIZED VEHICLES. WHERE THE SURFACE IS ASPHALT, CONCRETE, OR SOME OTHER HARD SURFACE
C- GROUND LEVEL PARKING CAN BE DIFFERENTIATED THROUGH DIFFERENT TONES AND PATTERN OF UNIT PAVERS. SEE L10
* PROVIDE "VAN ACCESSIBLE" SIGN FOR TYPE A ONLY

TYPE B: BARRIER FREE PARKING SPACE:

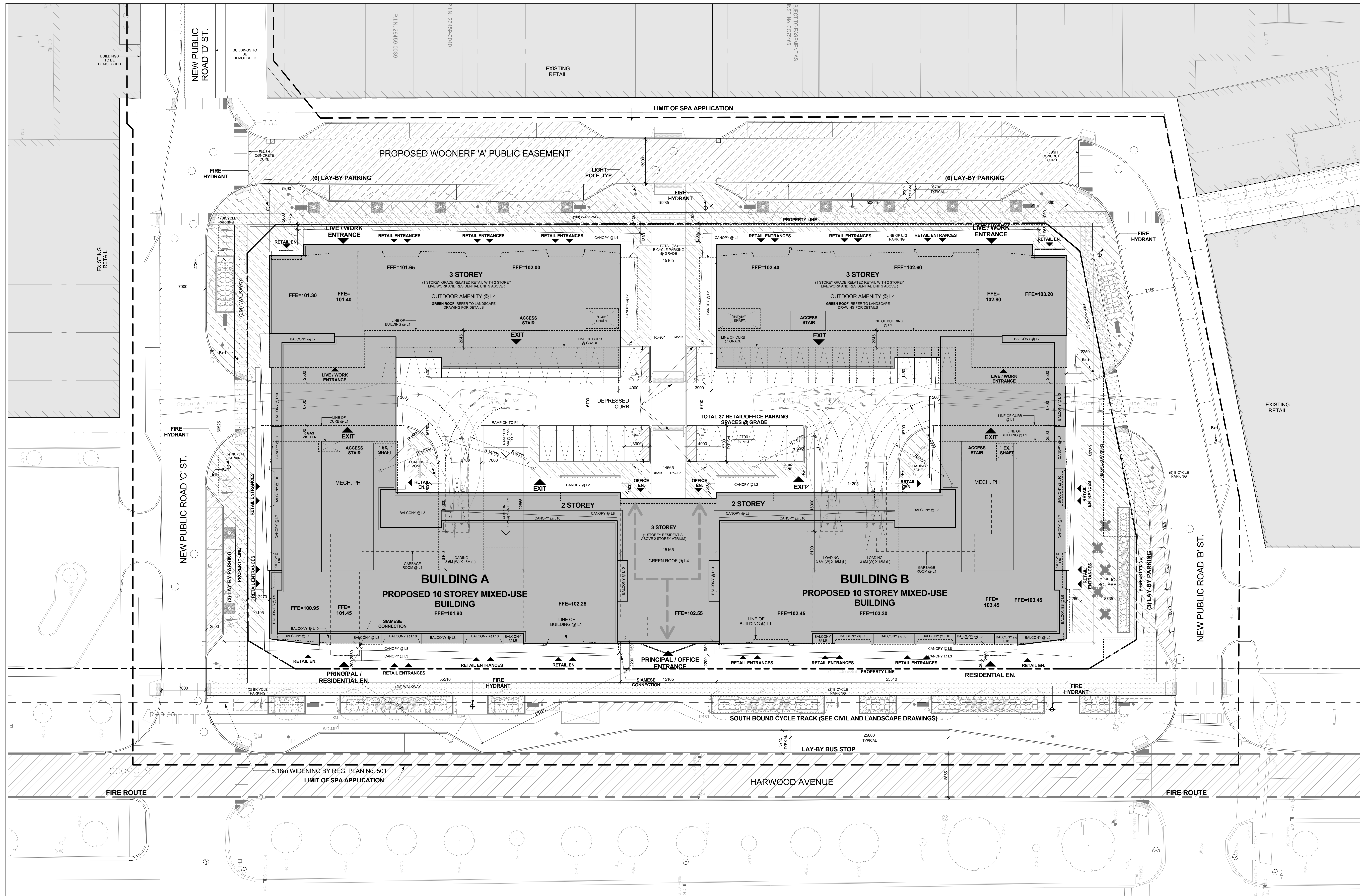


NOTE A- PROVIDE AN ADDITIONAL 300mm FOR PARKING SPACE WIDTH WHEN OBSTRUCTIONS OCCUR BETWEEN THE FRONT AND REAR 1000mm
B- ACCESSIBLE AISLE MUST HAVE A MINIMUM WIDTH OF 1500mm. MUST EXTEND THE FULL LENGTH OF THE PARKING SPACE. MUST BE MARKED WITH HIGH TONAL CONTRAST DIAGONAL LINES WHICH DISCOURAGES PARKING BY UNAUTHORIZED VEHICLES. WHERE THE SURFACE IS ASPHALT, CONCRETE, OR SOME OTHER HARD SURFACE
C- GROUND LEVEL PARKING CAN BE DIFFERENTIATED THROUGH DIFFERENT TONES AND PATTERN OF UNIT PAVERS. SEE L10

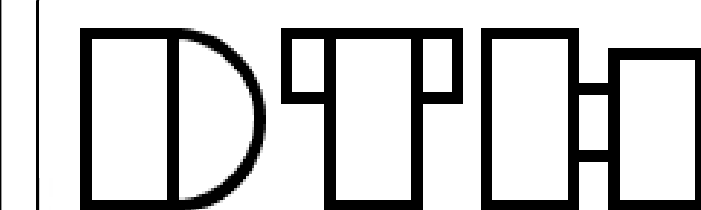
Typical Parking Space Legend 2
NTS A1.1



Line Weight Legend 1
NTS A1.1



Contractor Must Check And Verify All Dimensions On The Job.
Do Not Scale The Drawings.
All Drawings, Specifications And Related Documents Are The Copyright Of The Author And Must Be Returned Upon Request.
Reproduction Of Drawings, Specifications And Related Documents In Part Or Whole Is Forbidden Without The Author's Written Permission.
This Drawing Is Not To Be Used For Construction Until Signed By The Architect.
Date:



No. Revision Date

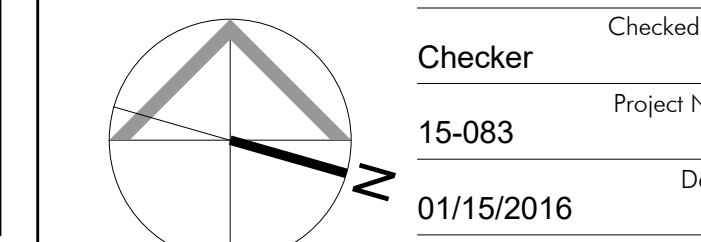
2. Issued For SPA Submission	Nov. 27, 2015
1. Issued For SPA Submission	Sep 30, 2015
No. Issued For	Date

Site Plan

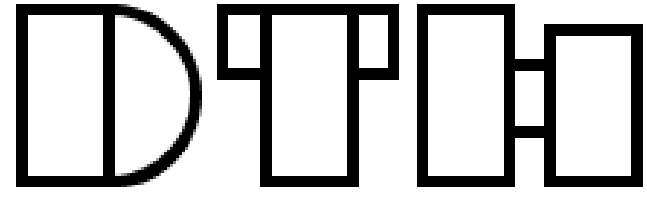
Project
LEMNIE INVESTMENT GROUP
GRAND HARWOOD PLACE
Proposed Mixed-Use
Development

184 Harwood Avenue, Ajax, Ontario

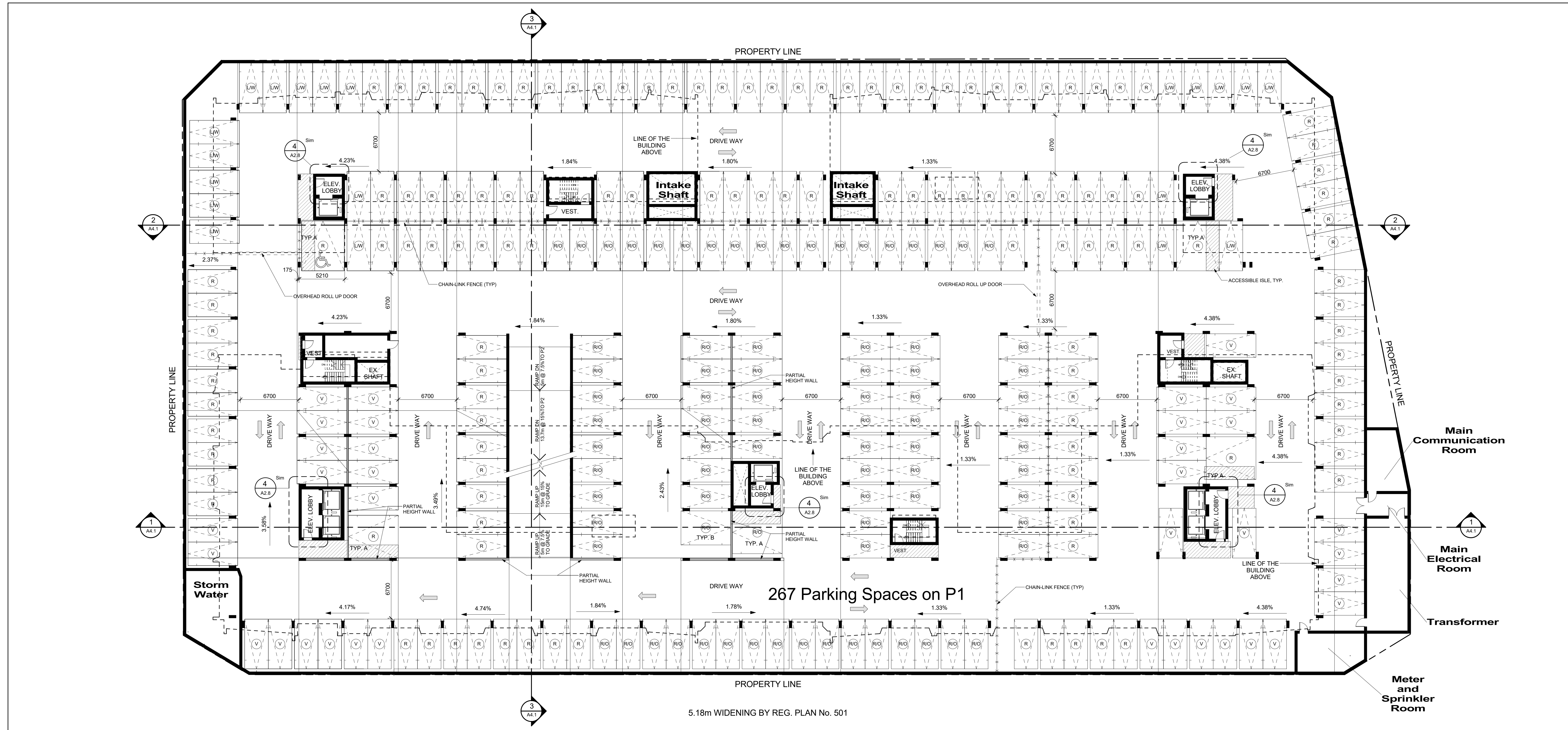
Scale
As Indicated
Author
Checked by
Checker
Project No.
15-083
Date
01/15/2016



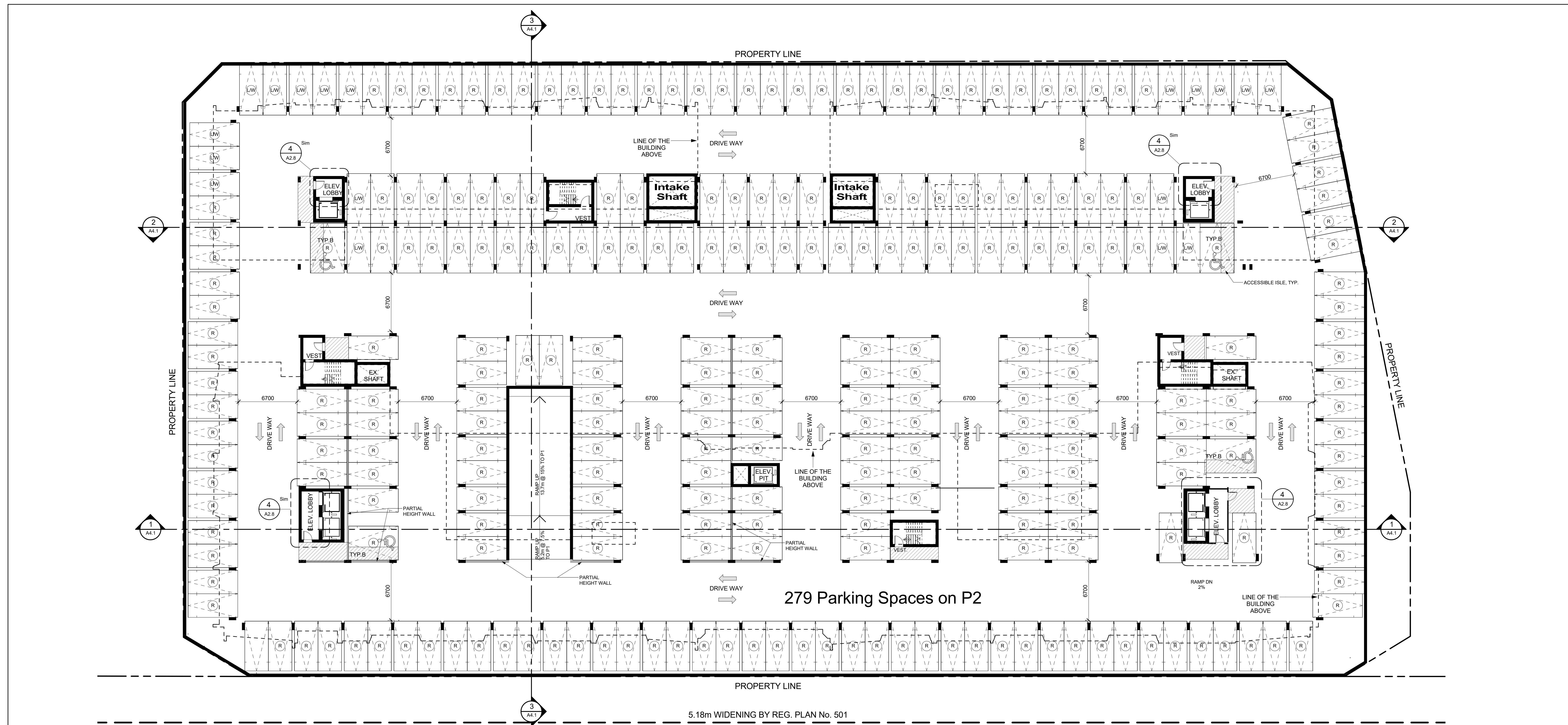
Site Plan 4
Scale: 1 : 200
A1.1



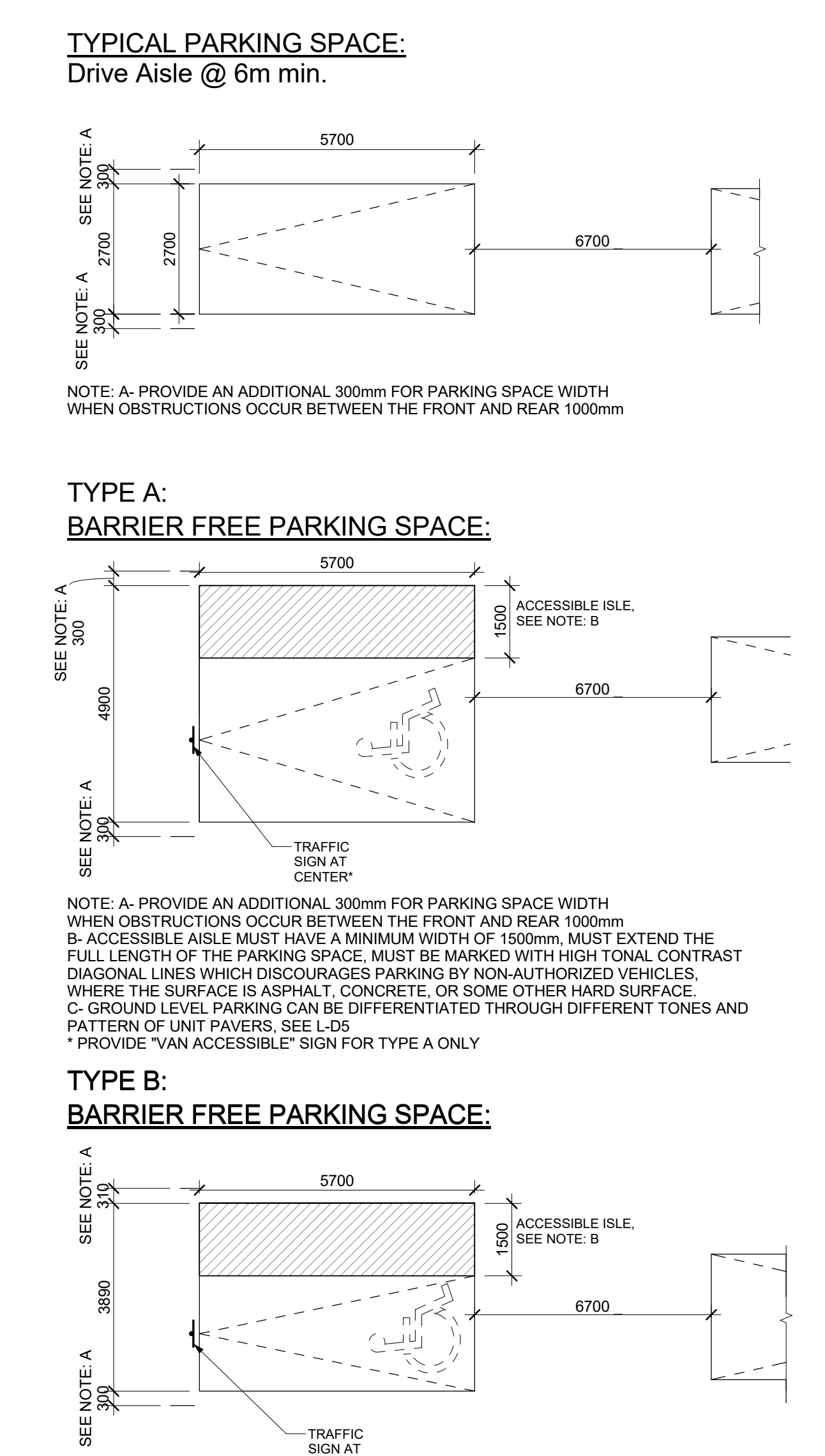
No.: Revision: Date



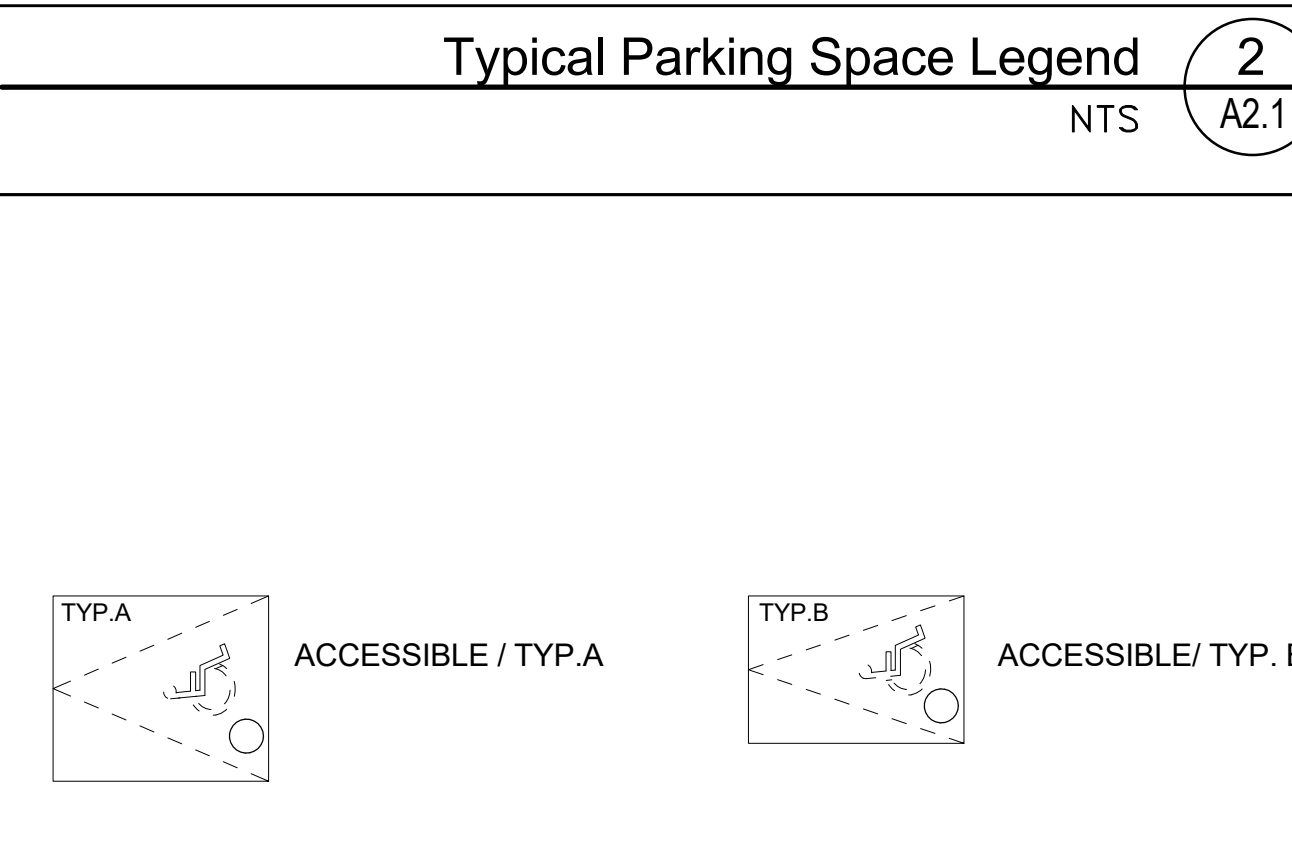
Level P1 - Underground Parking Garage Floor Plan 5
Scale: 1 : 200 A2.1



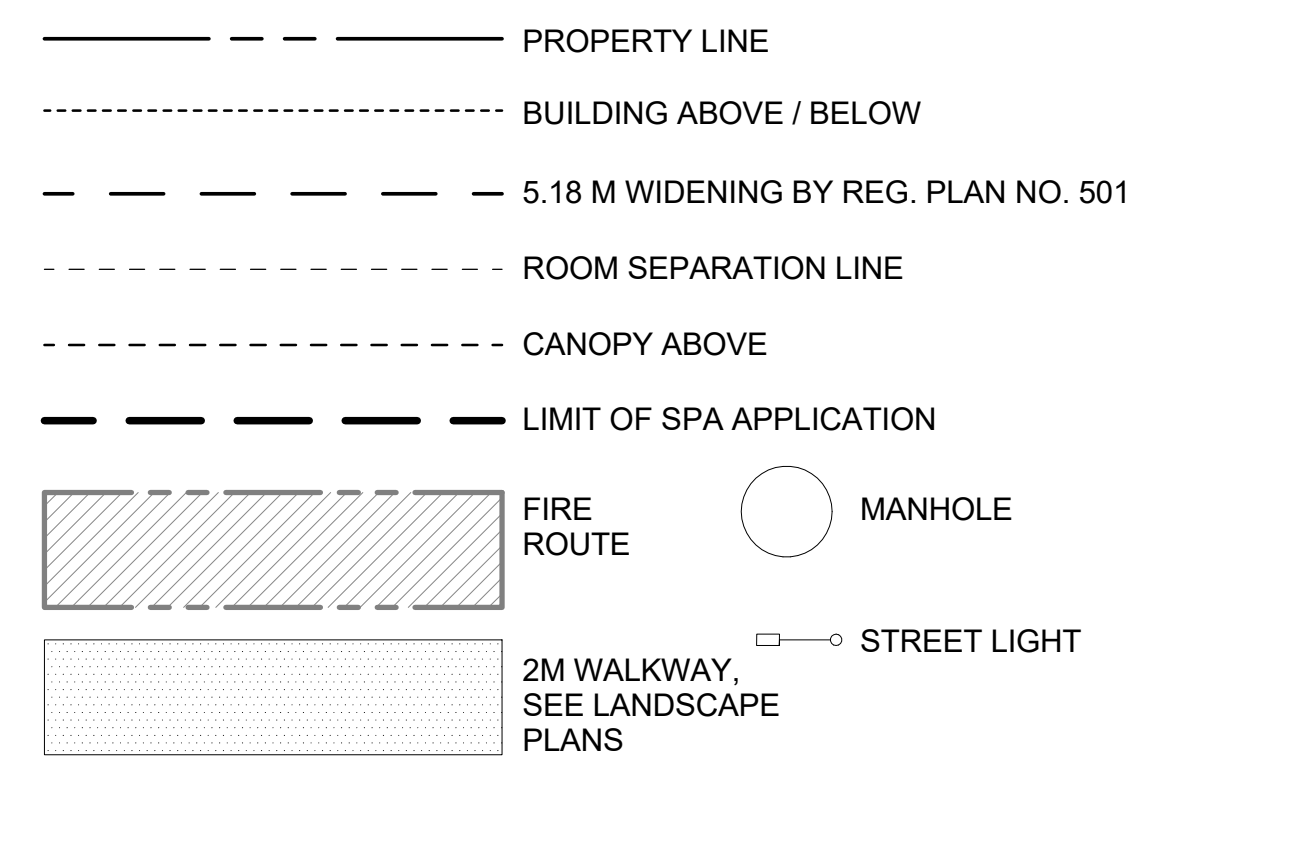
Level P2 - Underground Parking Garage Floor Plan 6
Scale: 1 : 200 A2.1



NOTE: A: PROVIDE AN ADDITIONAL 300mm FOR PARKING SPACE WIDTH WHEN OBSTRUCTIONS OCCUR BETWEEN THE FRONT AND REAR 1000mm.
B: ACCESSIBLE ISLE MUST HAVE A MINIMUM WIDTH OF 1500mm. MUST EXTEND THE FULL LENGTH OF THE PARKING SPACE. MUST BE MARKED WITH HIGH TONAL CONTRAST DIAGONAL LINES WHICH DISCOURAGES PARKING BY NON-AUTHORIZED VEHICLES. WHERE THE SURFACE IS ASPHALT, CONCRETE, OR SOME OTHER HARD SURFACE.
C: GROUND LEVEL PARKING CAN BE DIFFERENTIATED THROUGH DIFFERENT TONES AND PATTERN OF UNIT PAVERS. SEE L-05.



Parking Types 3
NTS A2.1



Line Weight Legend 4
NTS A2.1

- NOTES:**
- ALL ELEVATOR LOBBIES AND STAIR VESTIBULES MONITORED BY CCTV
 - ALL ELEVATOR LOBBIES TO HAVE FIRE RATED GLAZED ENCLOSURES
 - PROVIDE FA MINIMUM OF 300 LX LIGHTING IN PARKING GARAGE AREA AND LOBBY AREAS
 - SEE TMIP FOR SIGNAGE INFORMATION

Underground Parking Garage - Level P1 & P2 Floor Plans

GRAND HARWOOD PLACE Proposed Mixed-Use Development

184 Harwood Avenue, Ajax, Ontario

As Indicated

Scale

Drawn by

Checked by

Project No.

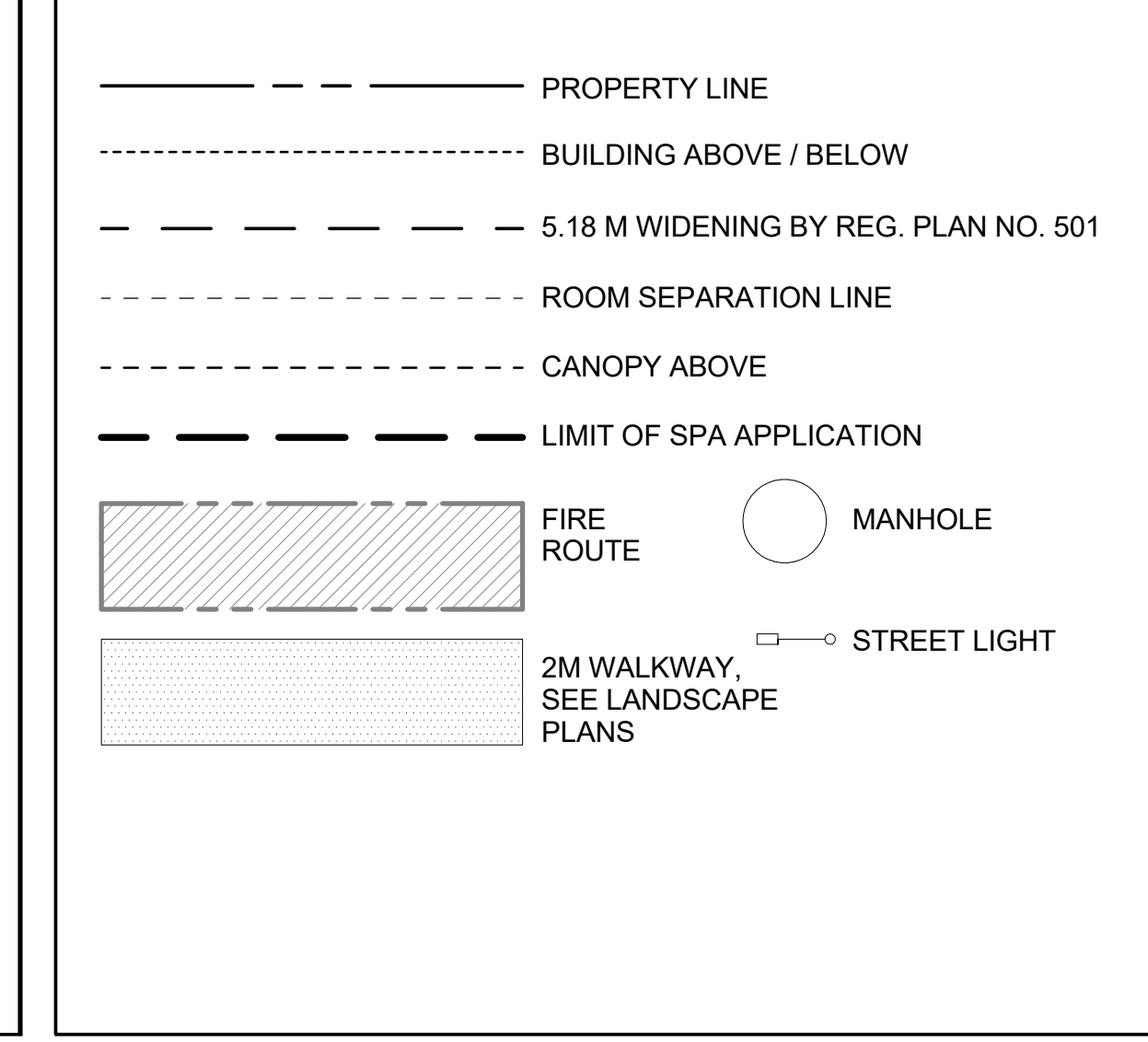
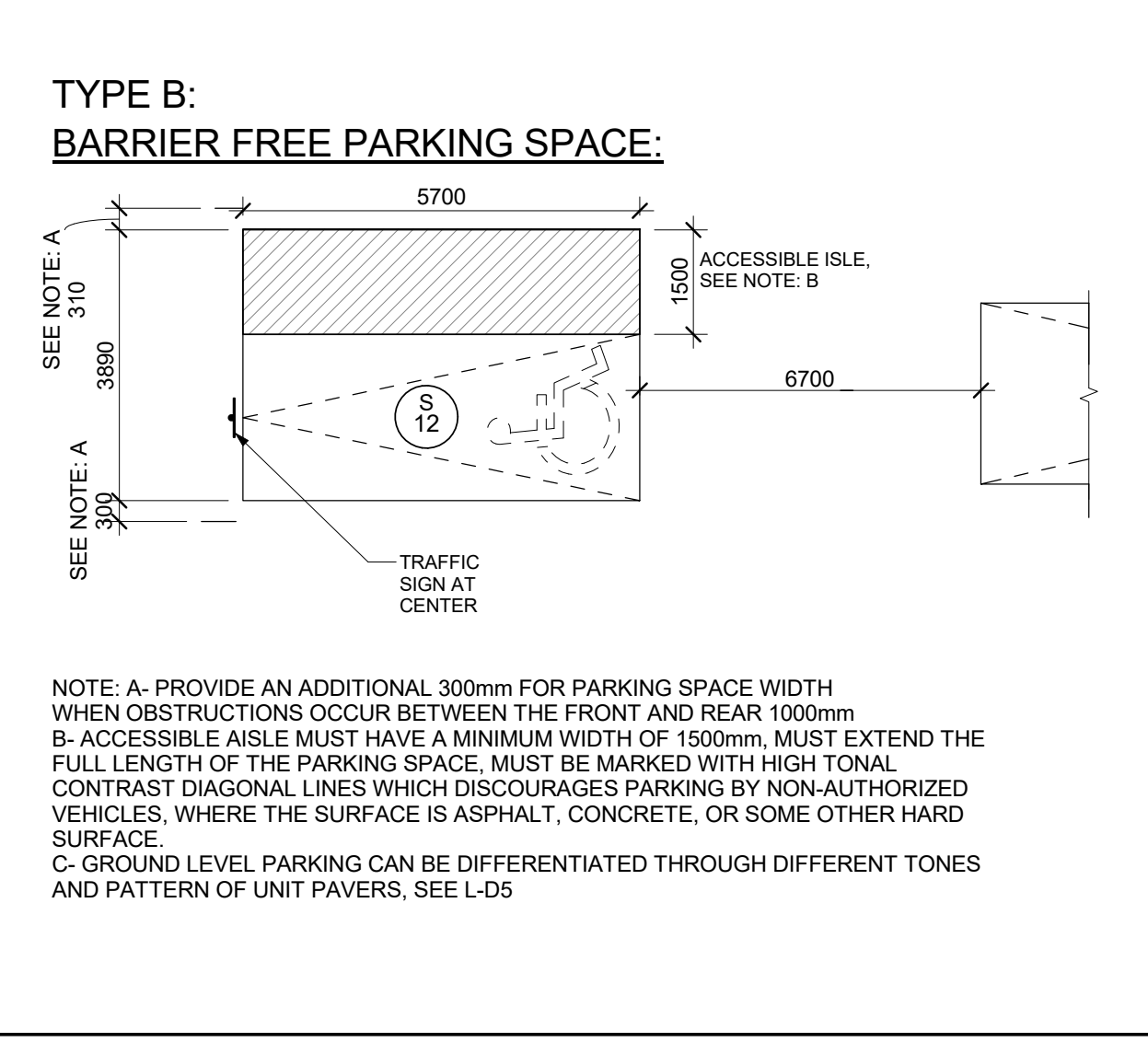
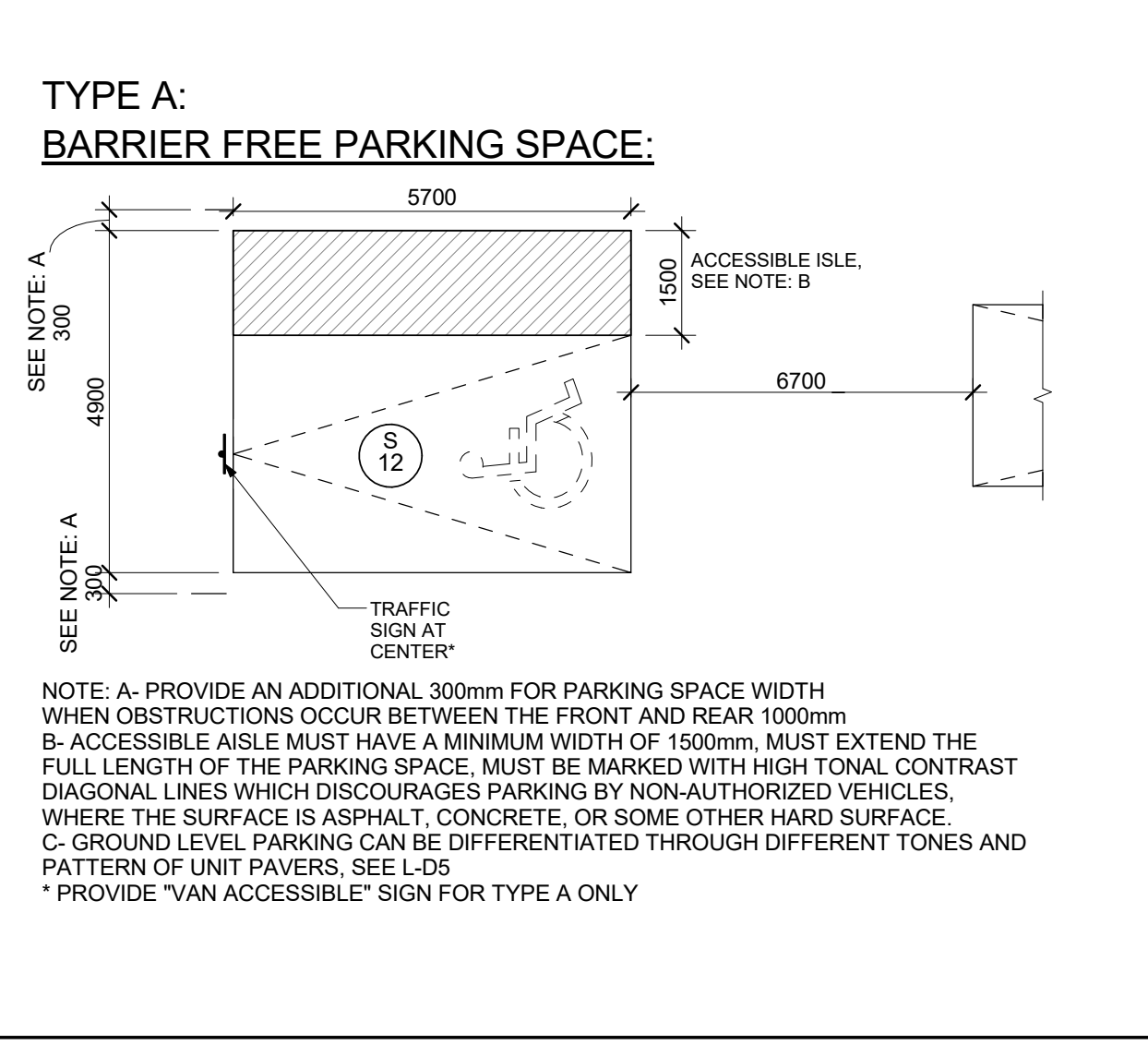
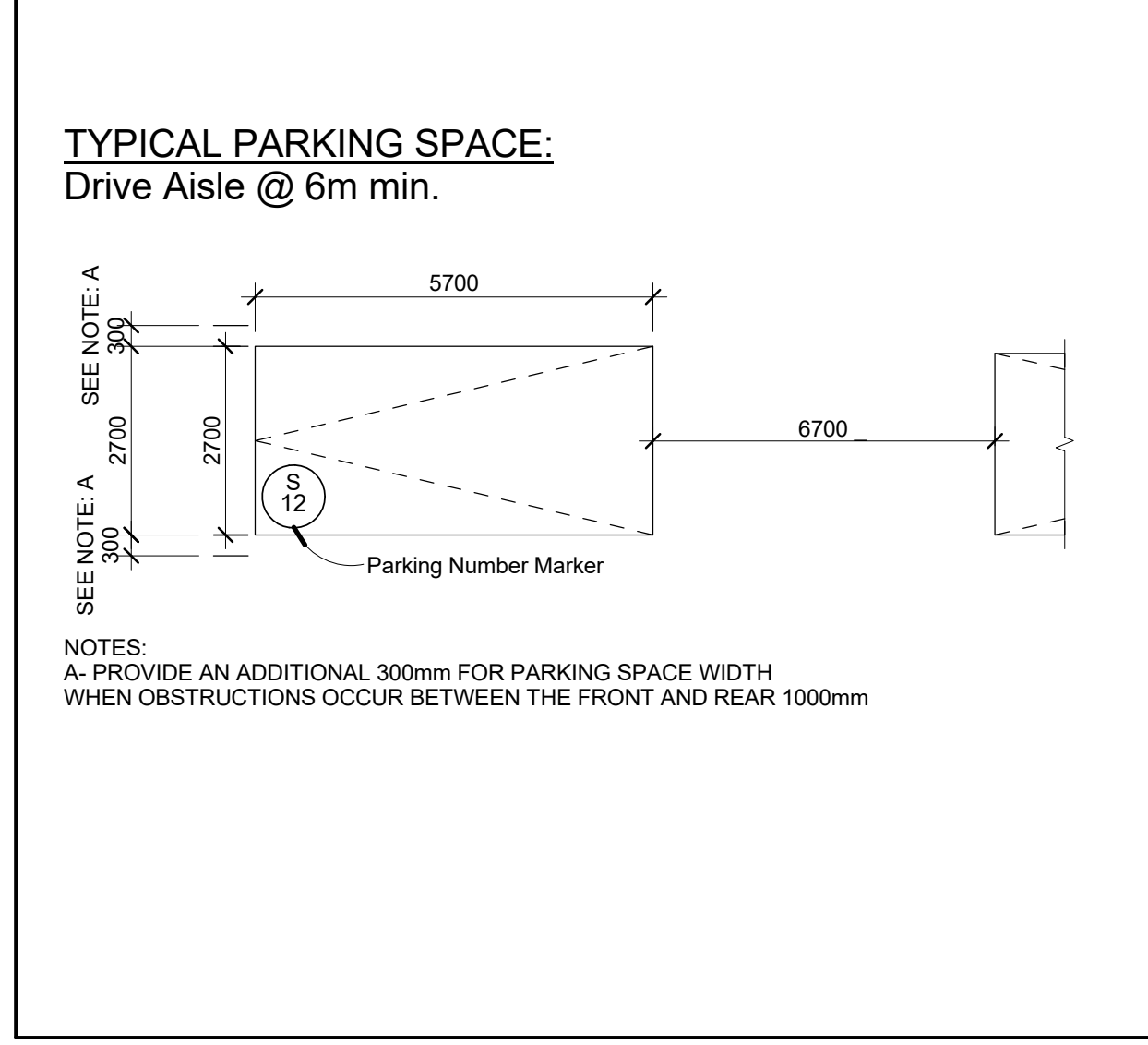
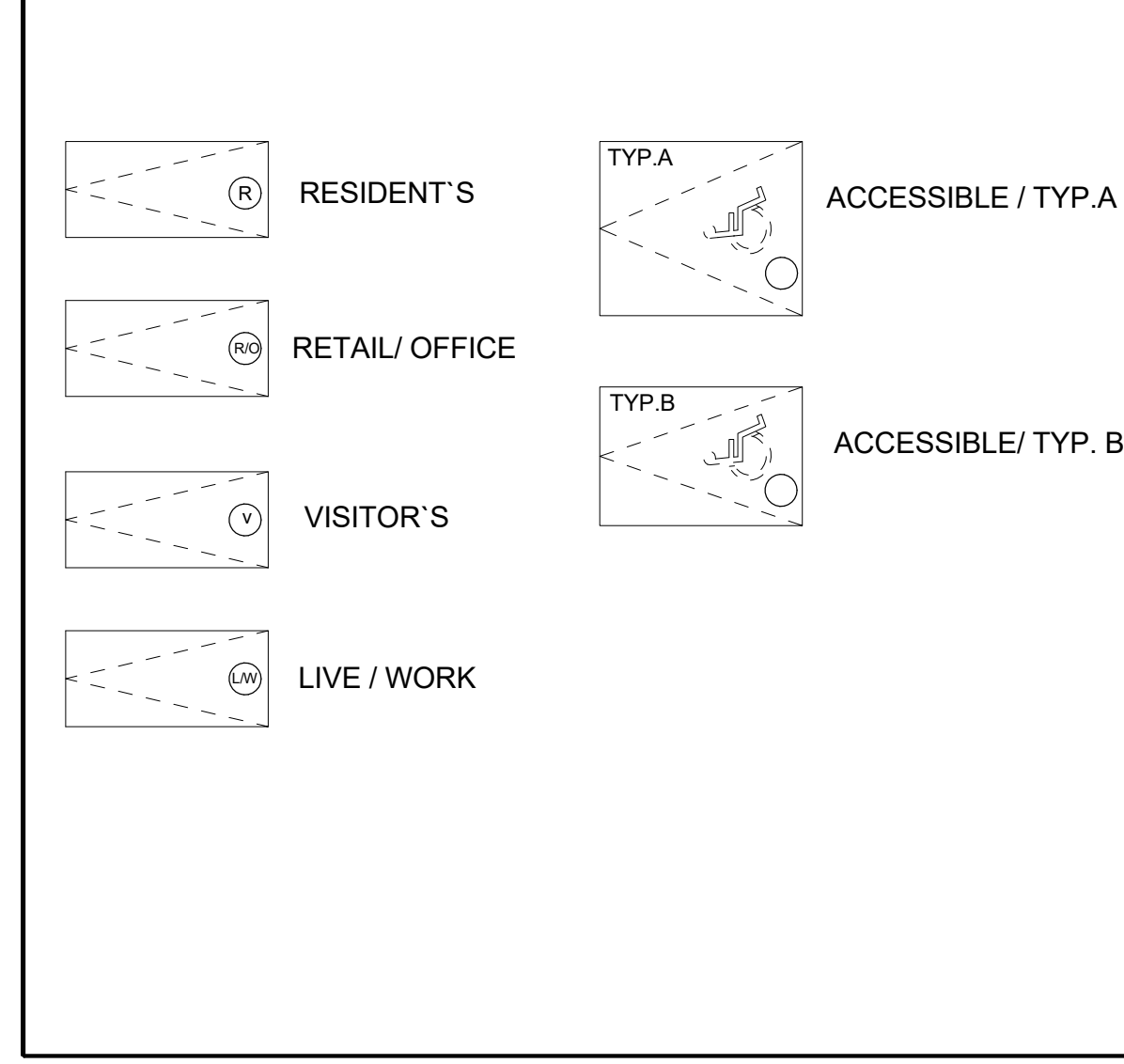
Date

Drawing No.

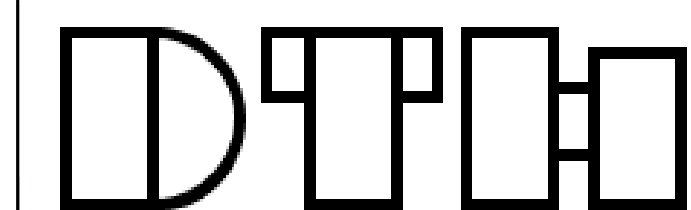
A2.1

NOTES:

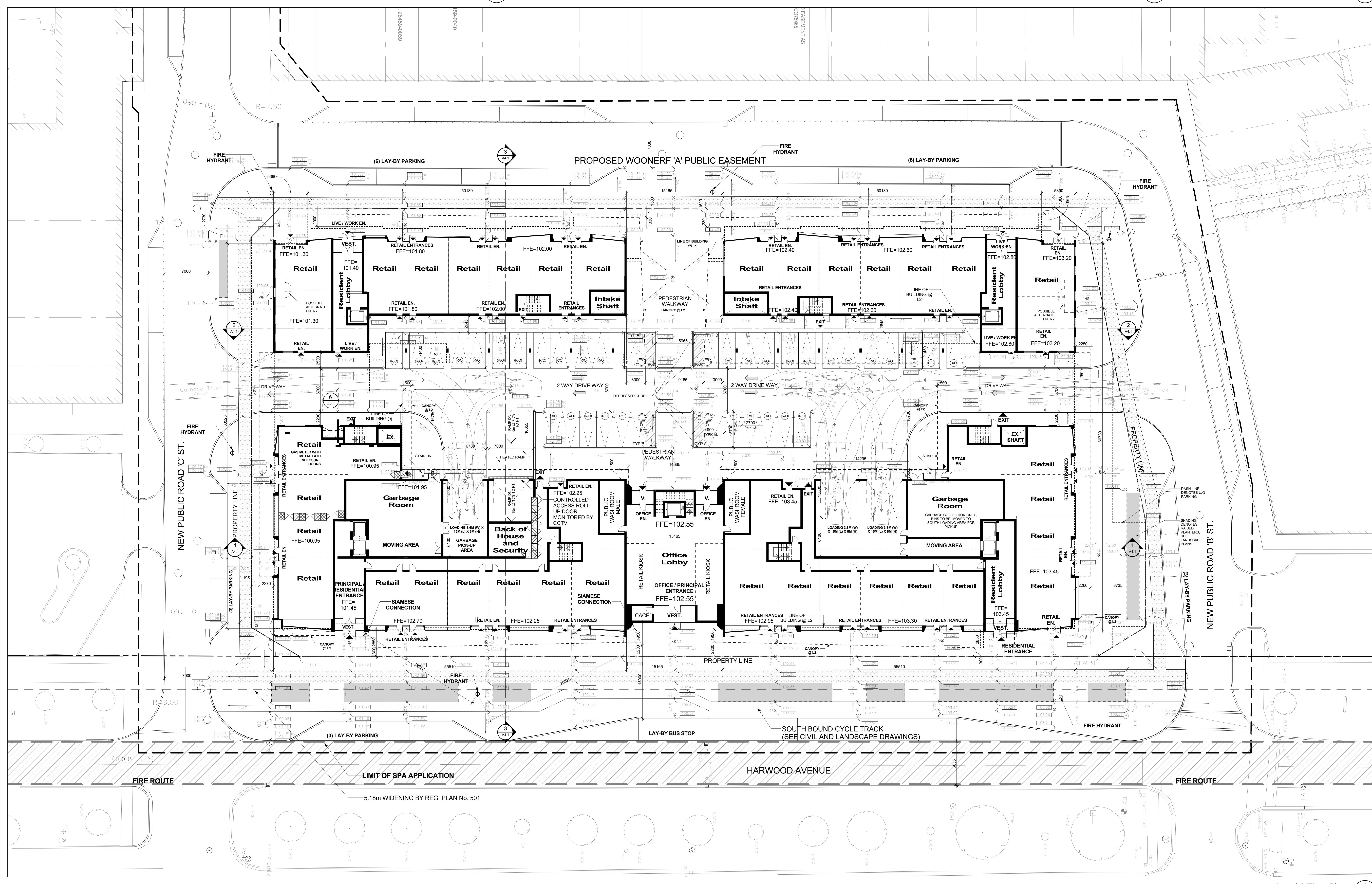
- FOR LANDSCAPE INFORMATION - REFER TO MBTW LANDSCAPE DWG
- FOR SITE SERVICING / GRADING DETAILS - REFER TO MORRISON HERSFIELD SITE SERVICING GRADING DWG
- FOR TRAFFIC SIGN INFO - REFER TO TRAFFIC REPORT BY CONSULTING LIMITED
- SEE LANDSCAPE DRAWINGS FOR GRADING INFORMATION



Contractor Must Check And Verify All Dimensions On The Job.
Do Not Scale The Drawings.
All Drawings, Specifications And Related Documents Are The Copyright Of The Architect And Shall Be Returned Upon Request.
Reproduction Of Drawings, Specifications And Related Documents In Part Or Whole Is Forbidden Without The Architect's Written Permission.
This Drawing Is Not To Be Used For Construction Until Signed By The Architect.
Date:



No.: Revision: Date:



Drawing Title: Level 1 Floor Plan

Project: GRAND HARWOOD PLACE Proposed Mixed-Use Development

184 Harwood Avenue, Ajax, Ontario

As Indicated

Scale: As Indicated

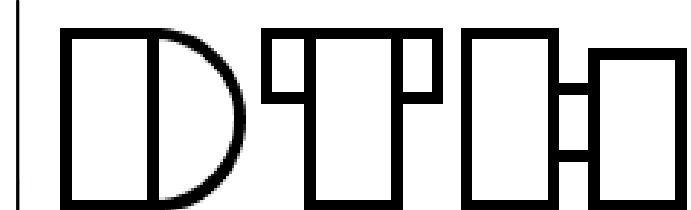
Drawn by: [Signature]

Checked by: [Signature]

Project No.: [Number]

Date: [Date]

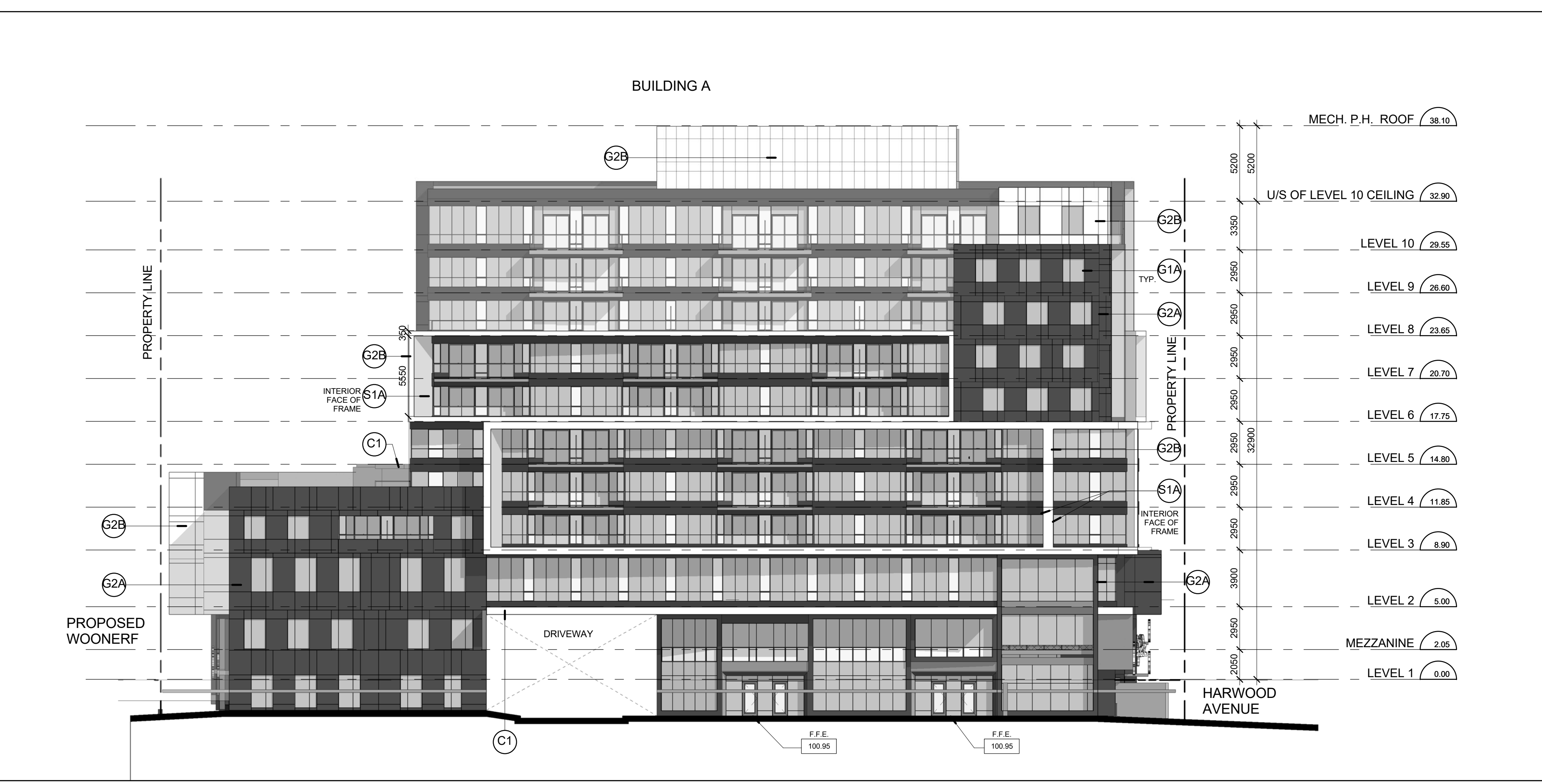
Drawing No.: 4 A2.2



No.: _____ Revision: _____ Date: _____



North Elevation **2**
Scale: 1 : 200 **A3.1**



South Elevation **1**
Scale: 1 : 200 **A3.1**



East Elevation **4**
Scale: 1 : 200 **A3.1**

EXTERIOR FINISH LEGEND

- EXTERIOR CLADDING**
- S1A** ALUMINUM PANELS, ESSENTIAL ACCENT COLOUR, ORANGE COLOUR, ANTI-CORROSION
 - S1B** ALUMINUM PANEL, RETAIL ACCENT COLOUR, DURANAR - BLUE/WHITE, DR 5MM
- GLAZING**
- G1A** ALUMINUM WINDOW WALL GLAZING SYSTEM - VISION PANEL
 - G1B** ALUMINUM WINDOW WALL GLAZING SYSTEM - SPANZIEL PANEL, BONE WHITE, DR 5MM
 - G1C** ALUMINUM WINDOW WALL GLAZING SYSTEM - HORIZONTAL ALUMINUM PANEL, DURANAR - STATUARY BRONZE, DR 5MM
 - G2A** ALUMINUM WINDOW WALL GLAZING SYSTEM - ALUMINUM PANEL, COLOUR 3 MEDIUM, DURANAR - FASHION GRAY, DR 5MM
 - G2B** ALUMINUM WINDOW WALL GLAZING SYSTEM - ALUMINUM PANEL, COLOUR 2 WHITE, DURANAR - BRIDGE WHITE, DR 5MM
 - G2C** ALUMINUM WINDOW WALL GLAZING SYSTEM - ALUMINUM PANEL, COLOUR 1 MEDIUM, DURANAR - FASHION GRAY, DR 5MM
 - G3A** ALUMINUM STORE FRONT GLAZING SYSTEM WITH VISION GLASS
 - G4** LOW IRON GLASS ON POINT SUPPORTS
- CANOPIES**
- C1** PREFINISHED ALUMINUM CANOPY WITH RECESSED SOFFIT LIGHTING, DURANAR - BRIDGE WHITE, DR 5MM
- RAILING**
- R1** PREFINISHED ALUMINUM RAILING WITH TEMPERED GLASS INSET
- DOORS**
- D1** GLAZED ALUMINUM FRAME DOOR, PART OF STOREFRONT SYSTEM
 - D2** GLAZED SLIDING DOOR, PART OF WINDOW WALL SYSTEM
 - D3** ALUMINUM ROLL UP DOOR, MATCH COLOUR OF ADJACENT WALL
- SIGNAGE**
- SG1** 3/8" BACKLIT RELIEF SIGNAGE
 - SG2** 3/8" DIMENSIONAL LETTERING SIGNAGE

Material List **3**
NTS **A3.1**



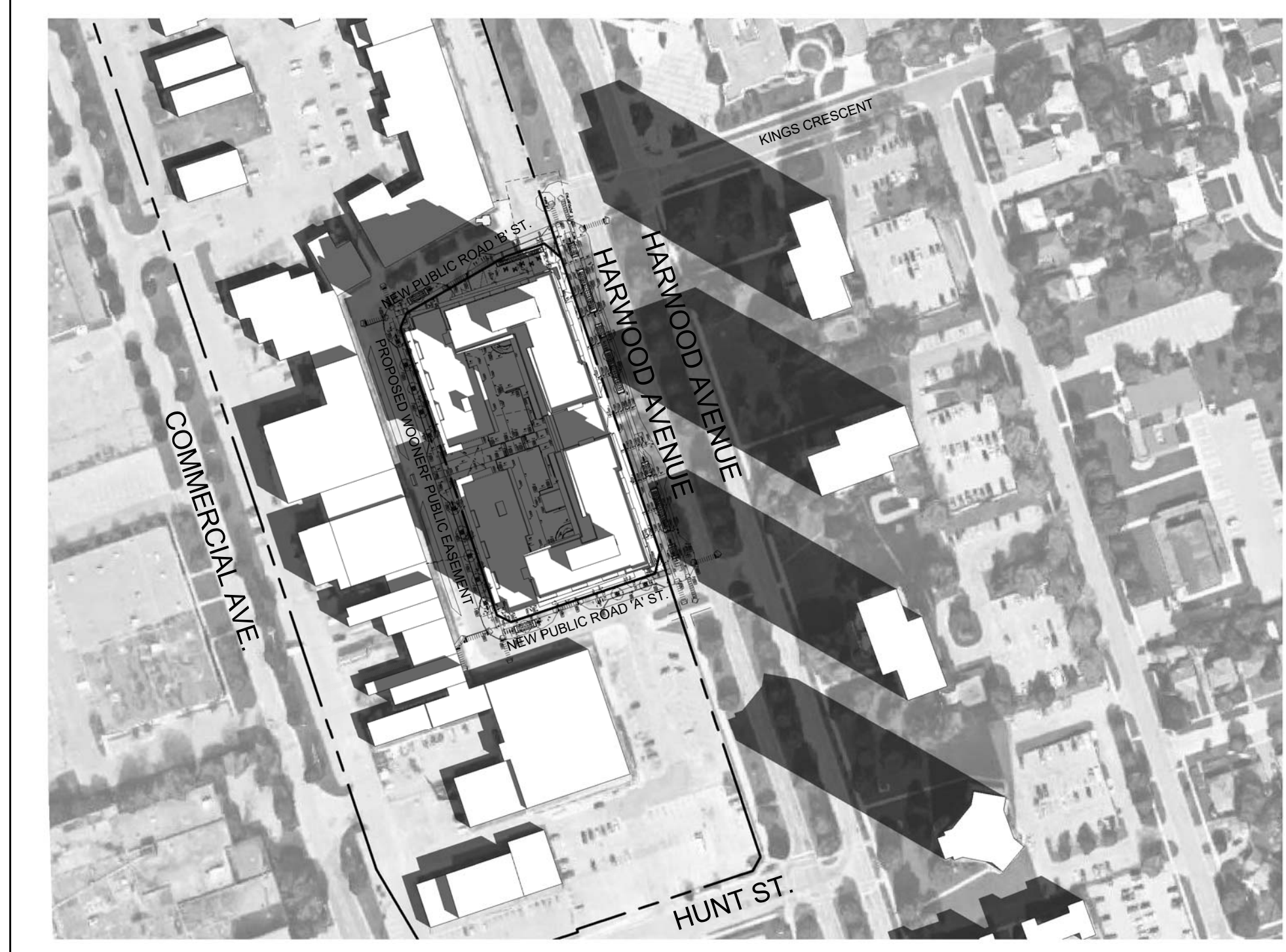
West Elevation **5**
Scale: 1 : 200 **A3.1**

Drawing Title
Exterior Elevations

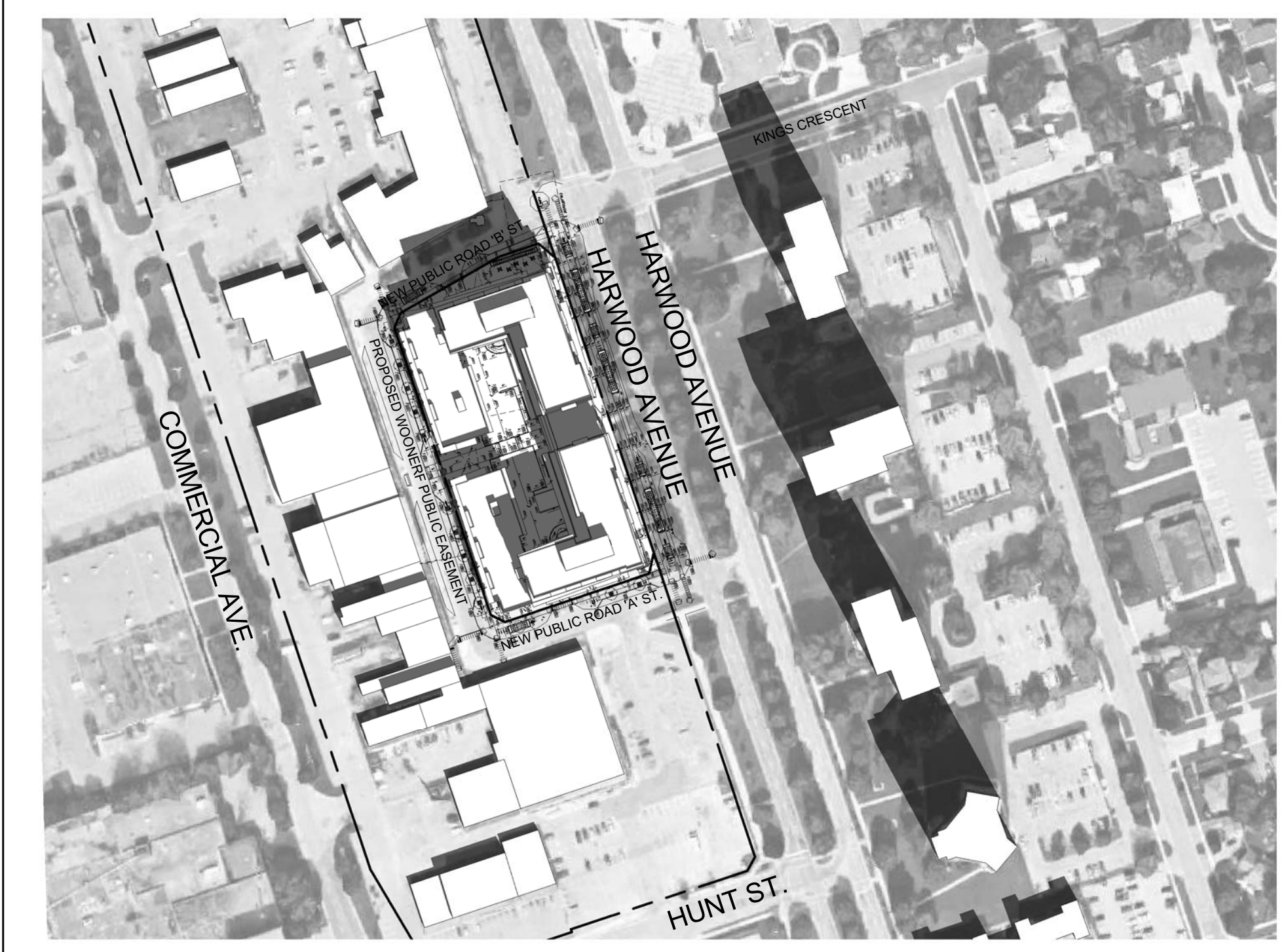
Project
**GRAND HARWOOD PLACE
Proposed Mixed-Use
Development**

184 Harwood Avenue, Ajax, Ontario
Scale
1 : 200
Drawn by
Checked by
Project No.
Date
Drawing No.

A3.1



March 21 @ 10:00 (16)
Scale: 1 : 2000 (A5.1)



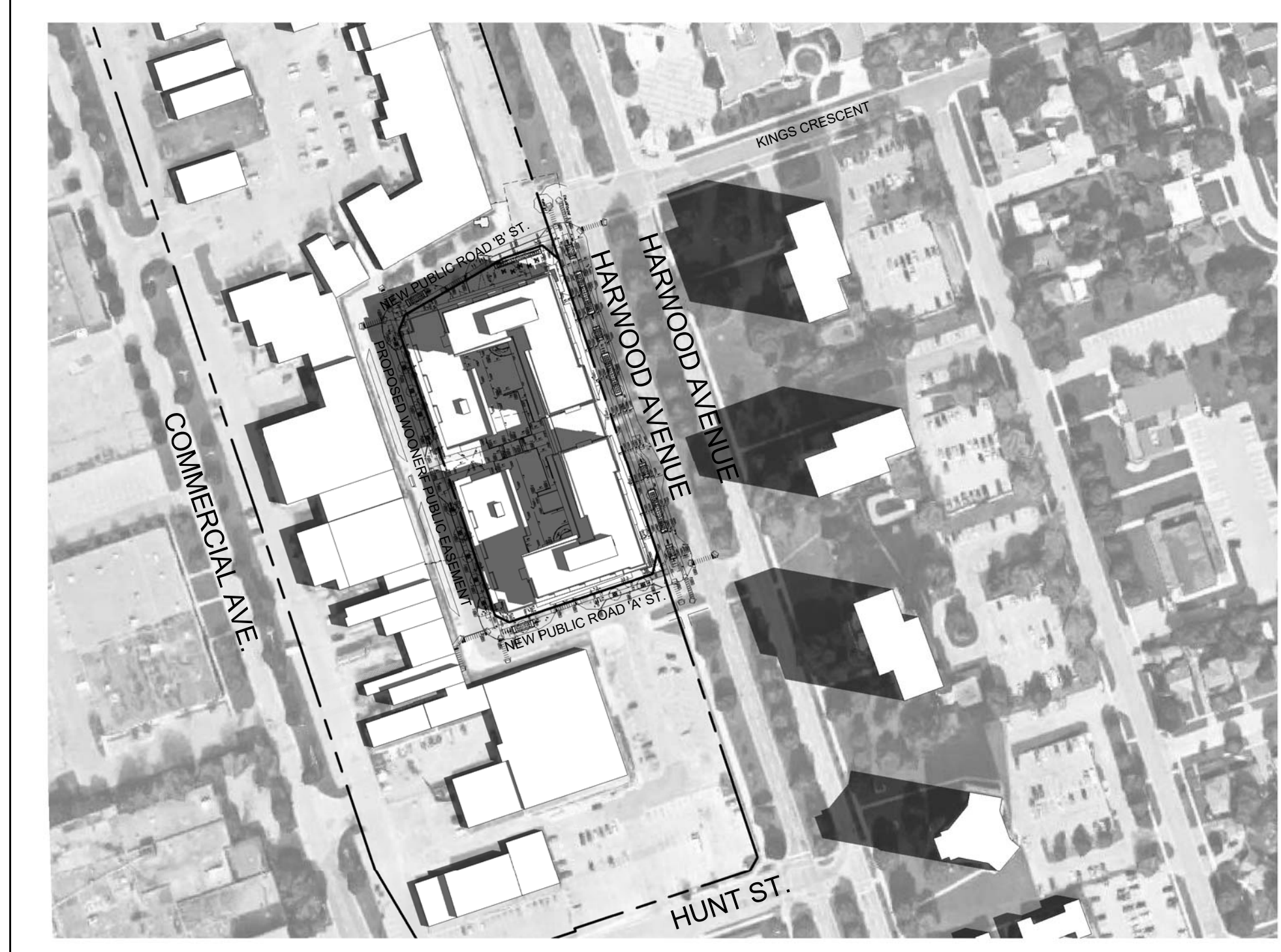
March 21 @ 12:00 (15)
Scale: 1 : 2000 (A5.1)



March 21 @ 14:00 (14)
Scale: 1 : 2000 (A5.1)



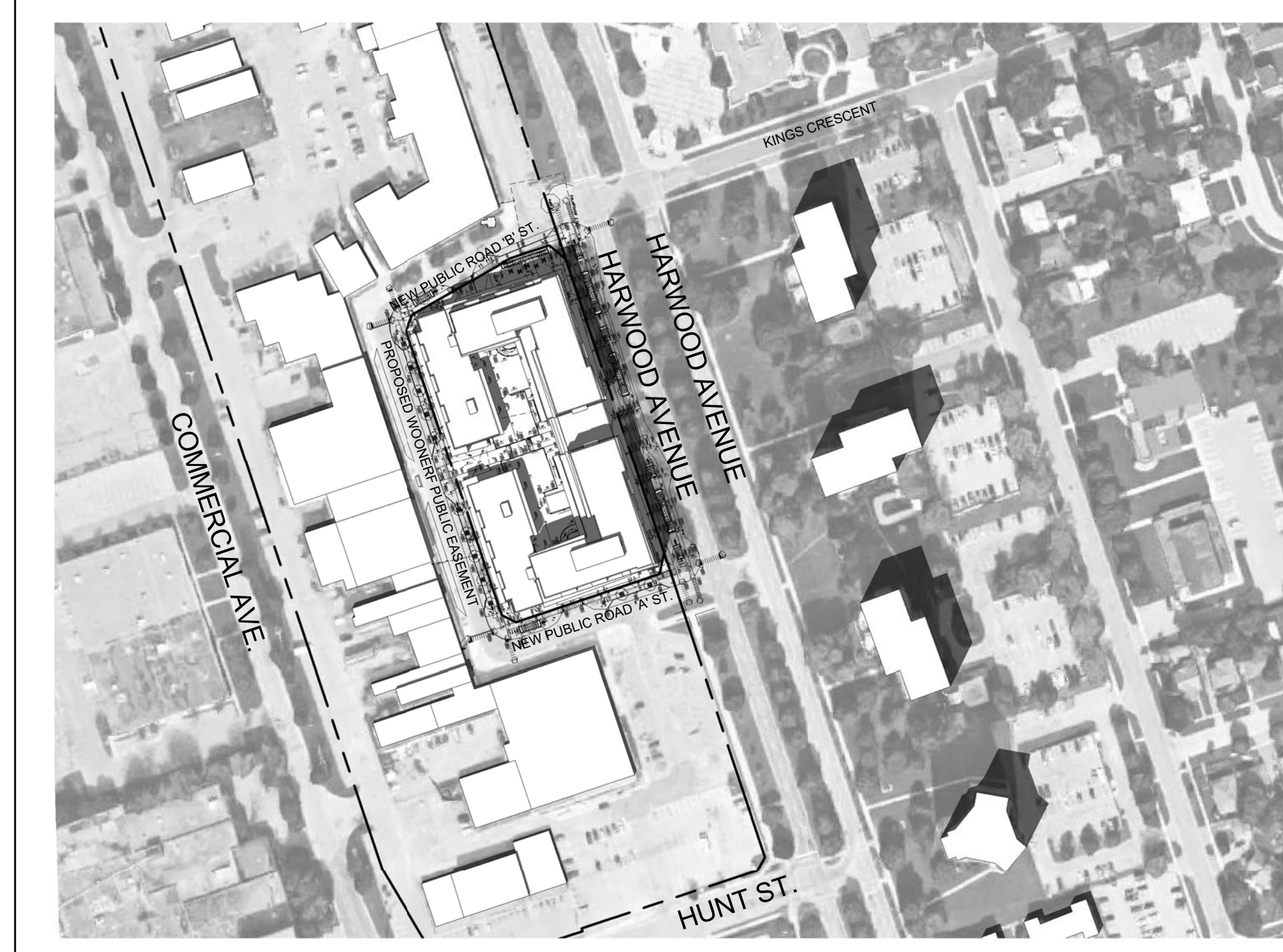
March 21 @ 16:00 (13)
Scale: 1 : 2000 (A5.1)



June 21 @ 10:00 (12)
Scale: 1 : 2000 (A5.1)



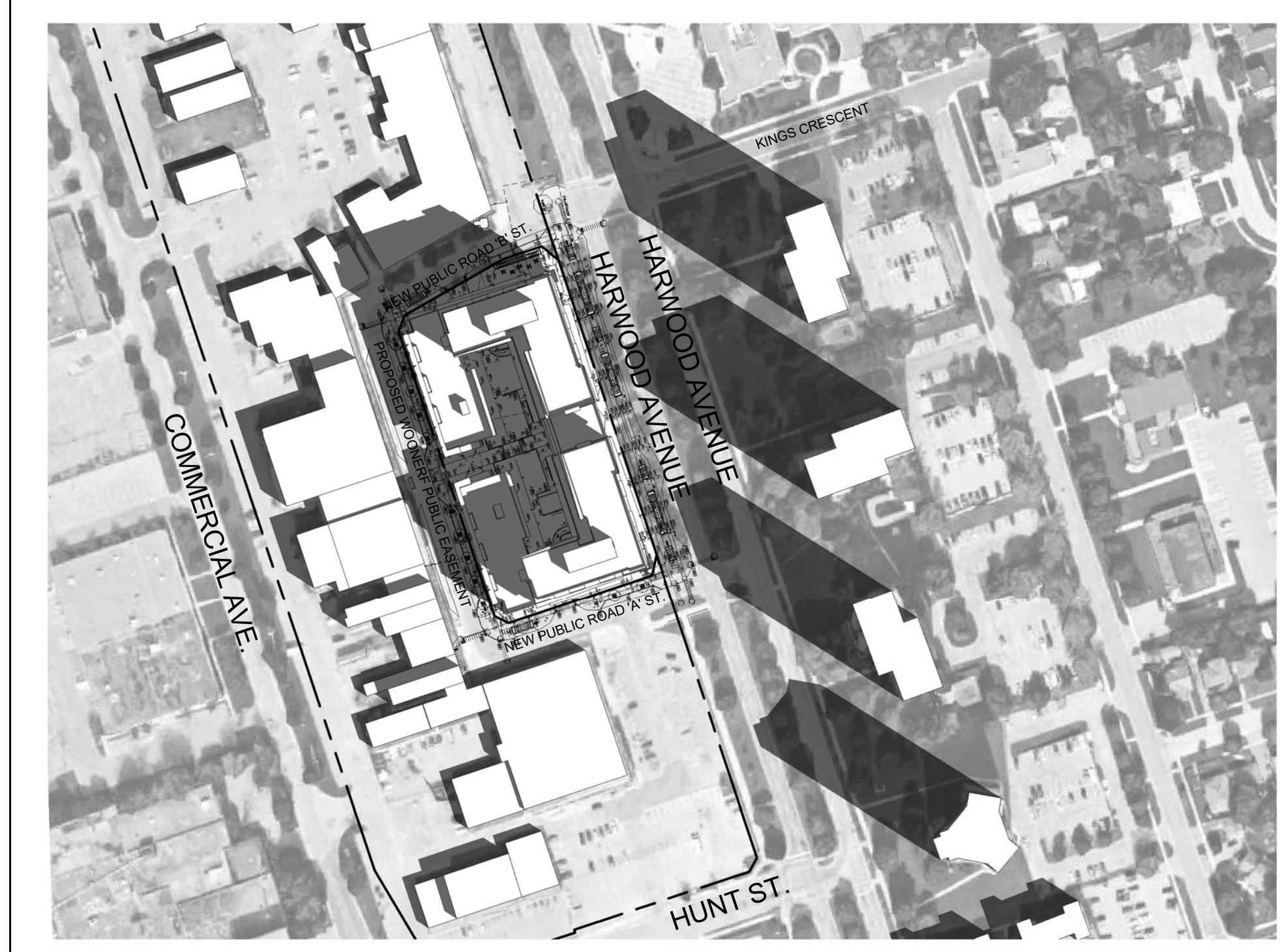
June 21 @ 12:00 (11)
Scale: 1 : 2000 (A5.1)



June 21 @ 14:00 (10)
Scale: 1 : 2000 (A5.1)



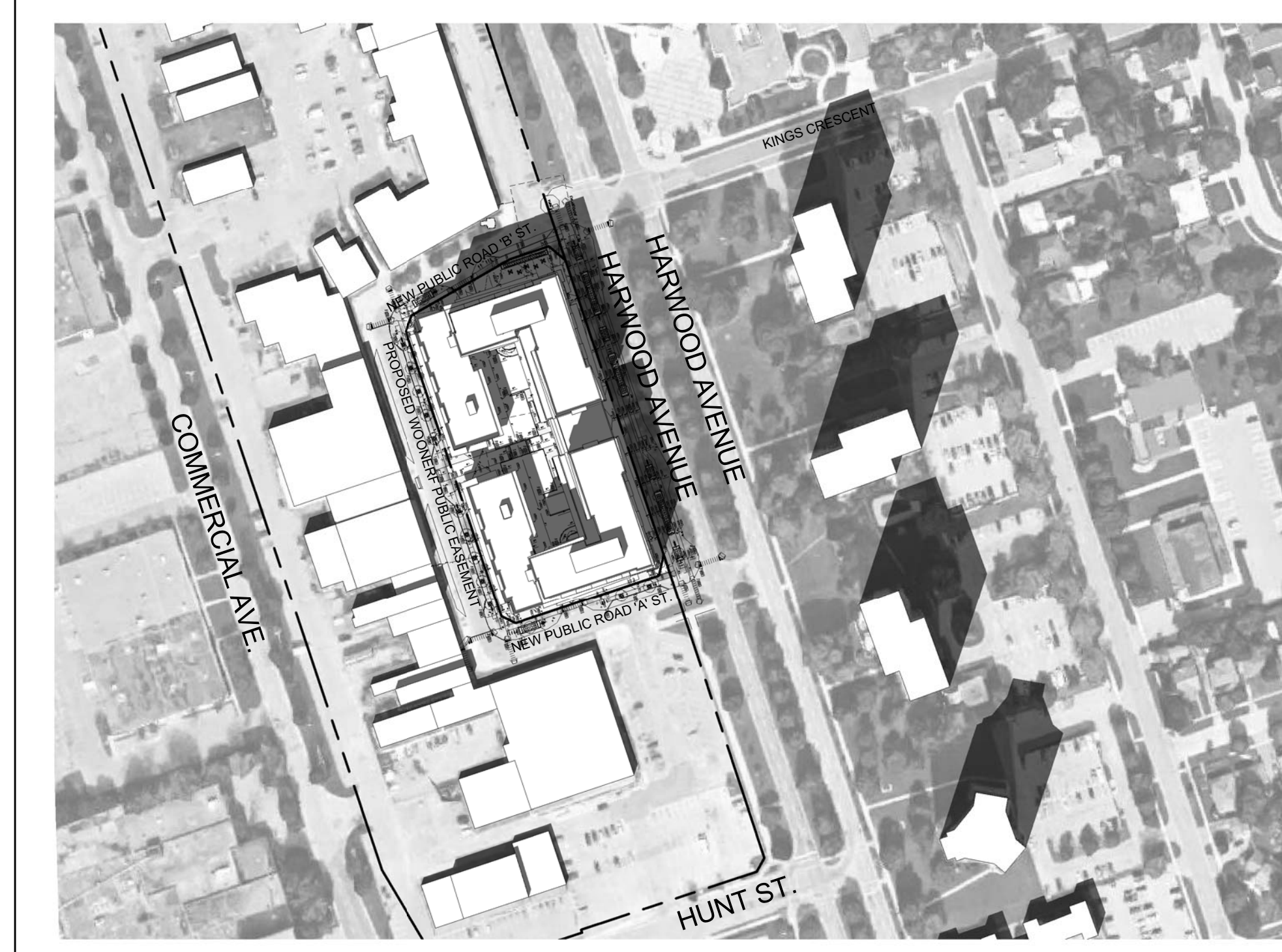
June 21 @ 16:00 (9)
Scale: 1 : 2000 (A5.1)



September 21 @ 10:00 (8)
Scale: 1 : 2000 (A5.1)

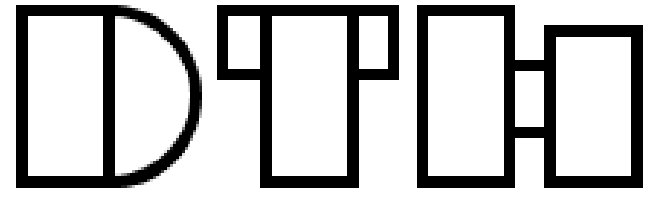


September 21 @ 12:00 (7)
Scale: 1 : 2000 (A5.1)



September 21 @ 14:00 (6)
Scale: 1 : 2000 (A5.1)

Contractor Must Check And Verify All Dimensions On The Job.
Do Not Scale The Drawings.
All Drawings, Specifications And Related Documents Are The Copyright Of The Architect And Shall Be Returned Upon Request.
Reproduction Of Drawings, Specifications And Related Documents In Part Or Whole Is Forbidden Without The Architects Written Permission.
This Drawing Is Not To Be Used For Construction Until Signed By The Architect.
Date:



No. Revision Date

Drawing Title

Shadow Study - March,
June, September,
December 21st

Project

GRAND HARWOOD PLACE
Proposed Mixed-Use
Development

184 Harwood Avenue, Ajax, Ontario

Scale

1 : 2000

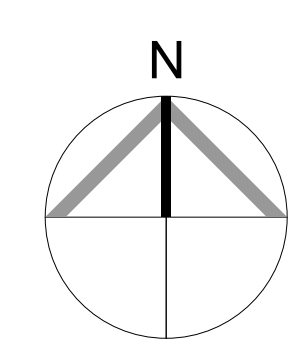
Drawn by

Checked by

Project No.

Date

Drawing No.



A5.1